

Longwood University

Digital Commons @ Longwood University

Fall Showcase for Research and Creative Inquiry

Office of Student Research

Fall 11-15-2021

Geographic Distribution and History of Plant Specimens at Longwood University Harvill-Stevens Herbarium

Ross Bechtle

Follow this and additional works at: https://digitalcommons.longwood.edu/rci_fall



Part of the [Environmental Sciences Commons](#)

Recommended Citation

Bechtle, Ross, "Geographic Distribution and History of Plant Specimens at Longwood University Harvill-Stevens Herbarium" (2021). *Fall Showcase for Research and Creative Inquiry*. 152.
https://digitalcommons.longwood.edu/rci_fall/152

This Poster is brought to you for free and open access by the Office of Student Research at Digital Commons @ Longwood University. It has been accepted for inclusion in Fall Showcase for Research and Creative Inquiry by an authorized administrator of Digital Commons @ Longwood University. For more information, please contact hamiltonma@longwood.edu, alwinehd@longwood.edu.



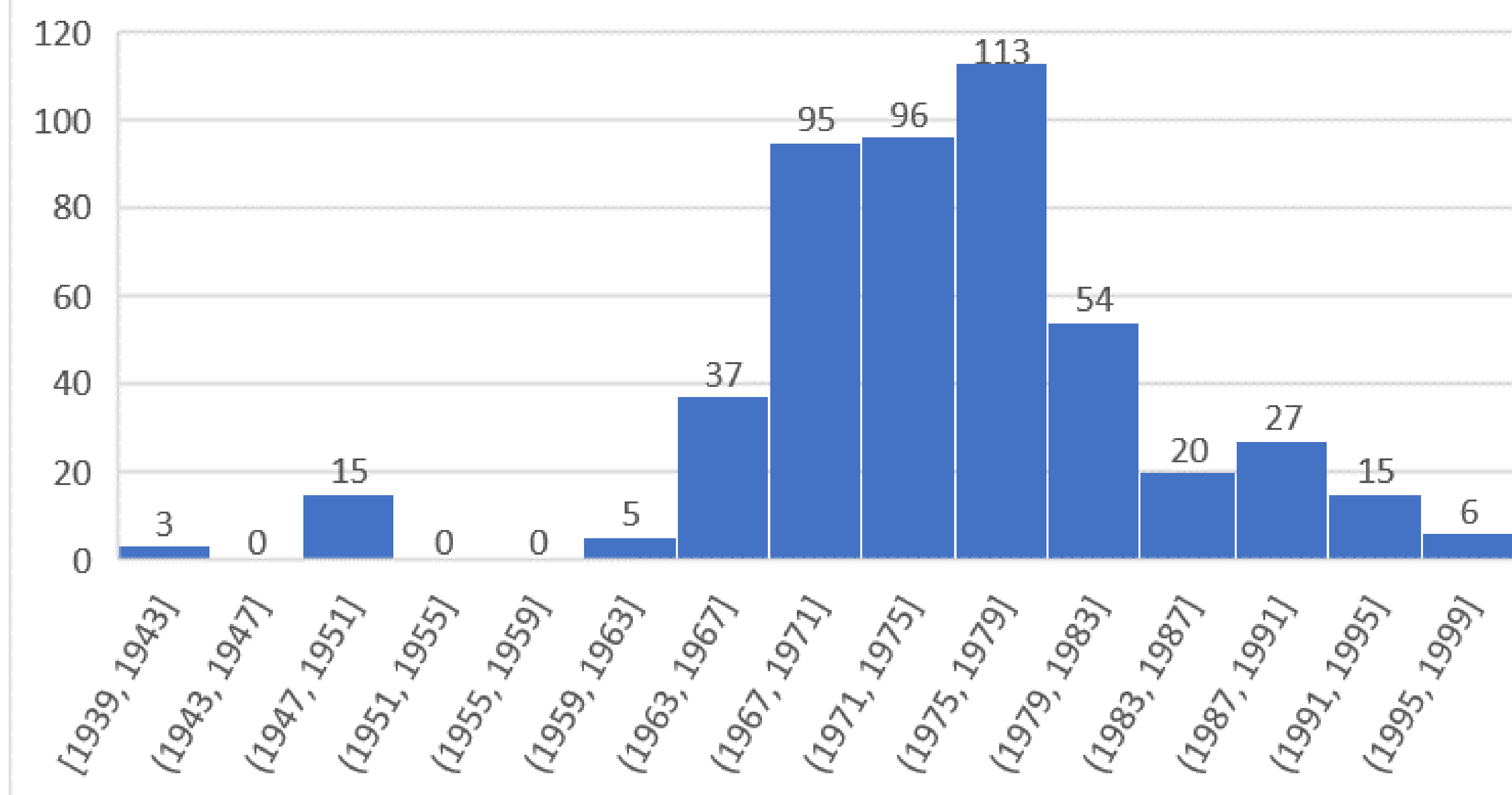
Ross Bechtle

Harvill-Stevens Herbarium, Longwood University
Herbarium Intern

Introduction

- The Harvill-Stevens Herbarium is the largest collection of Virginia native plants in the world and the second largest herbarium in the state of Virginia. With more than 75,000
- Founded in 1963 by Dr. Alton M. Harvill, professor emeritus of the Department of Natural Sciences at Longwood College.
- Considered one of the finest and most significant systematic collections of vascular plants in the mid-Atlantic region

Year Specimens Were Collected



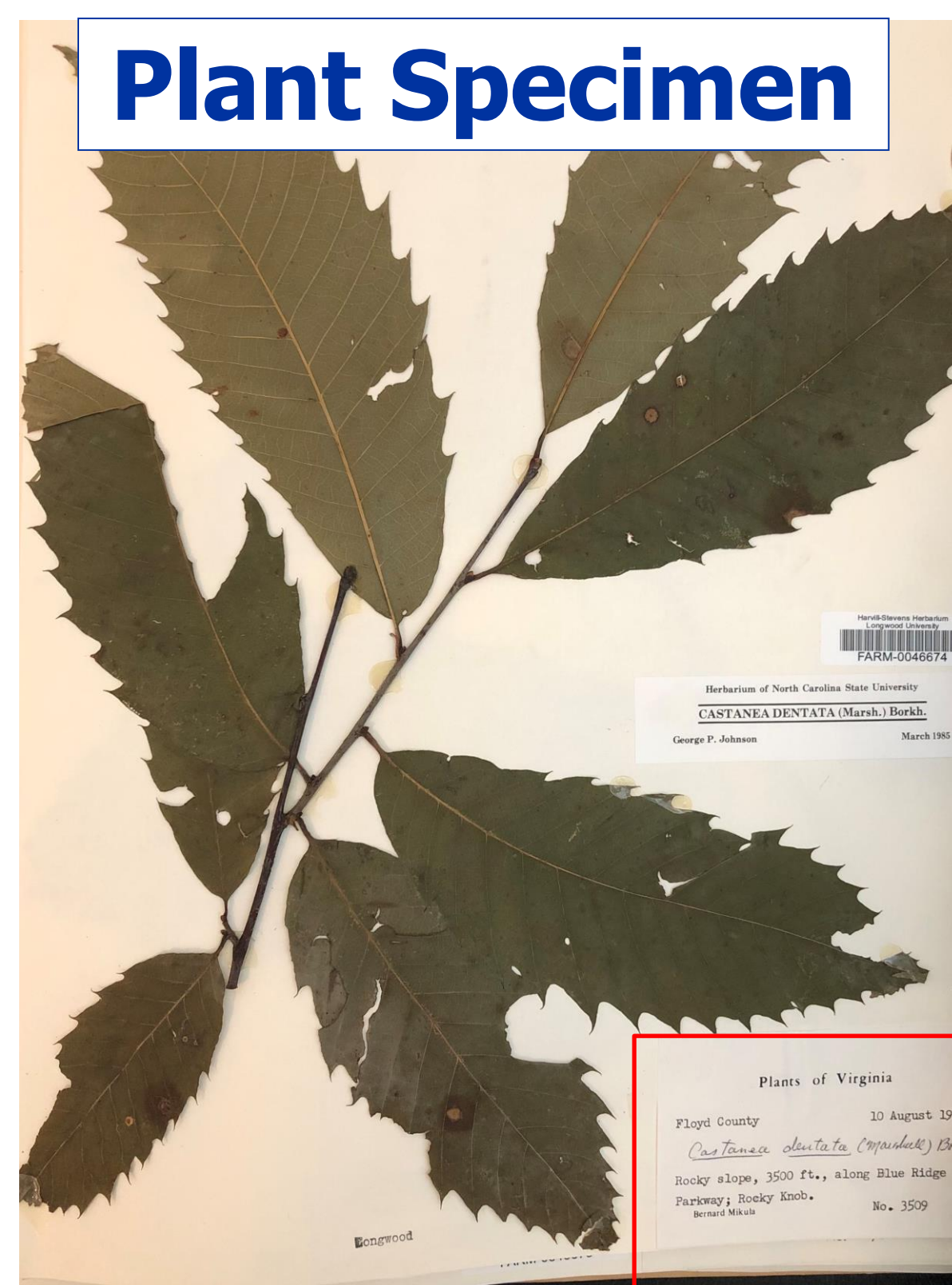
Research Question

Where and when were the Harvill-Stevens Herbarium's specimens collected?

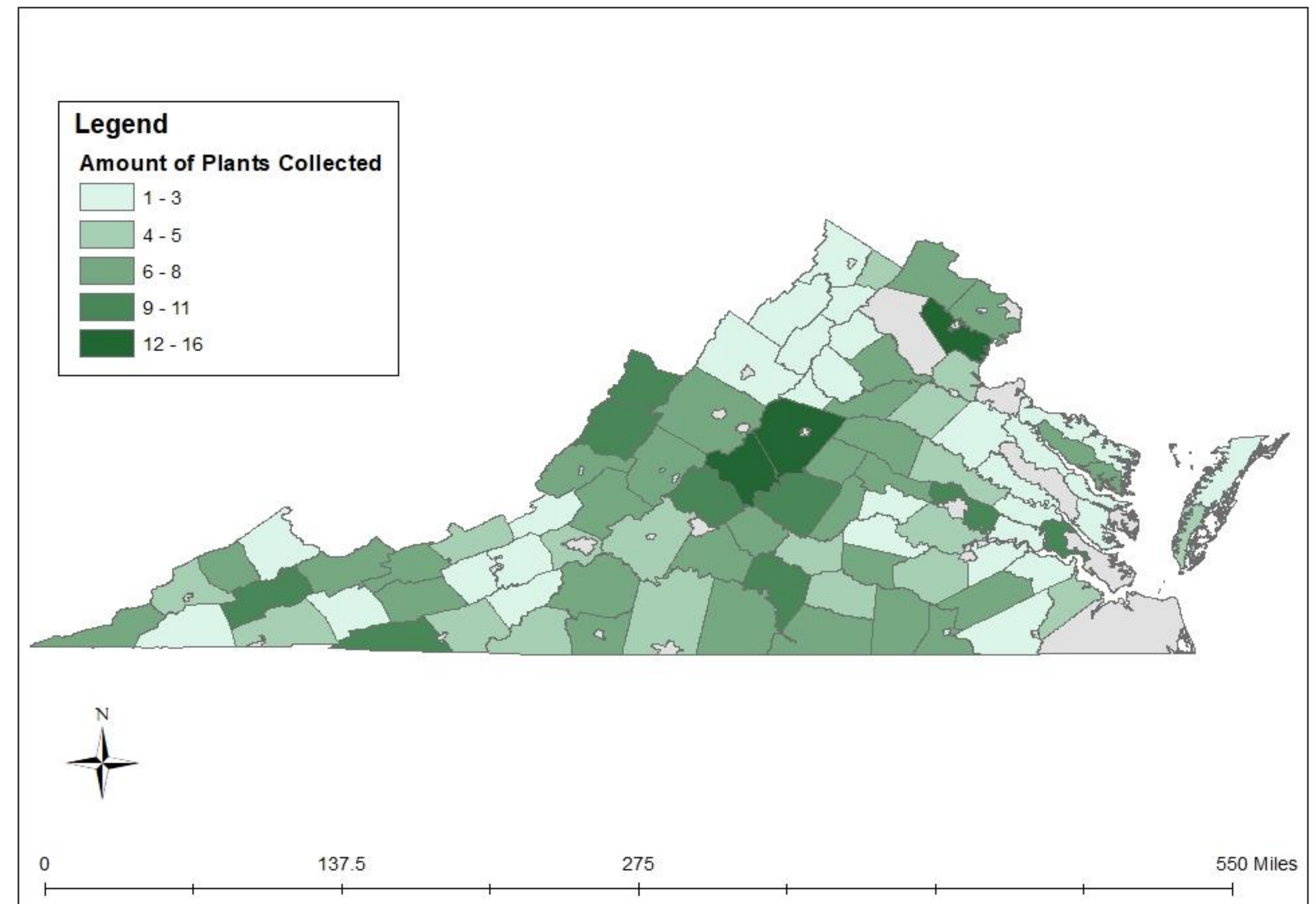
Methods

- 500 random plants were analyzed for the origin of their collection
- Each plant was individually examined for date and collection location information

Plant Specimen



Geographic Distribution of 500 Plant Sample at the Harvill-Stevens Herbarium



Results

- There are slight hot spots in Nelson, Albemarle, and Prince William counties yet there is an overall even distribution of plant collection in the counties of Virginia
- 62.5% of the specimens were collected between 1967 and 1979 with the oldest from 1939 and newest from 1997

Conclusions

Overall, the distribution of the Harvill-Stevens Herbarium's sample of plants is evenly distributed across Virginia and most of the plants were collected between 1967 and 1979.

References and Acknowledgements

Wright, R. A. (2011). Alton McCaleb Harvill, Jr. (1916-2008): A Necrology and Tribute. *Virginia Natural History Society*.

Thank you to Dr. Adhikari for letting me become an intern at the herbarium and have access to the Harvill-Stevens Herbarium's collection for this research.

