



Farmville - Prince Edward Historical Society

P.O. Box 546

Farmville, Virginia 23901

August 2014

“A Trip to Nepal”

by Rena’ Koesler

Tuesday, August 19, 2014

7:00 p.m.

CHANGE IN MEETING LOCATION!!!

Farmville Presbyterian Church

Guests Always Welcomed

Board Meets at 6:00 p.m.

CHANGE IN MEETING LOCATION FOR THIS MEETING ONLY: *Farmville Presbyterian Church Fellowship Hall, 200 W. Third St., Farmville, VA*

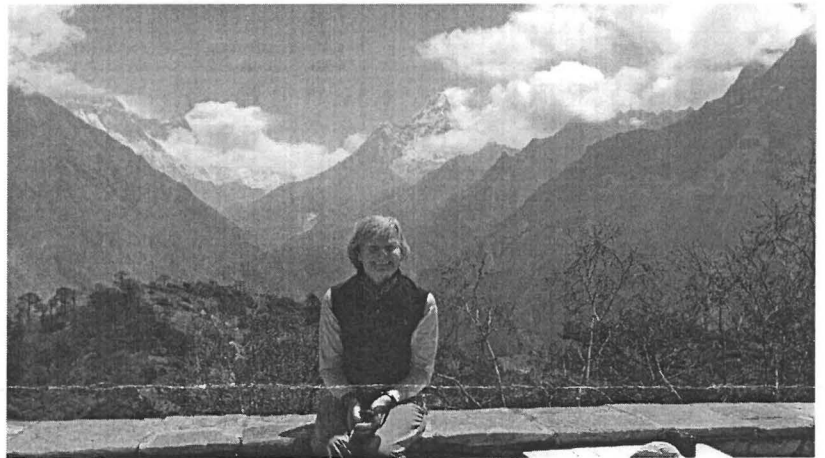
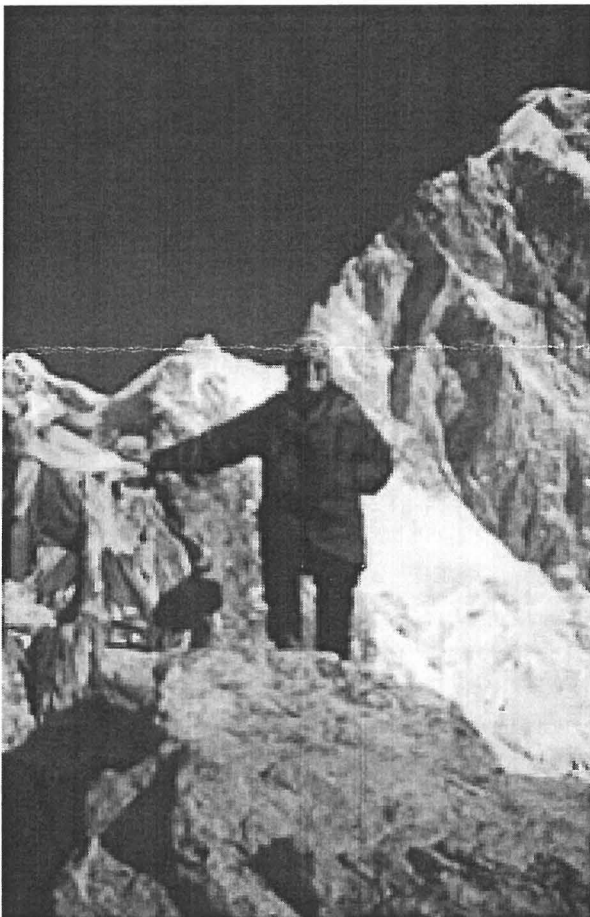
Enter from left side of church, next to Farmville Wholesale Electric. Parking on both sides of the church.

“A Trip to Nepal” by Rena’ Koesler

Rena’ has been a professor at Longwood University for over 25 years. She teaches in the Therapeutic Recreation Program and Outdoor Education Program. She received her PhD from Michigan State Univ., her MS from Texas A& M Univ., and her Bachelor’s from Western Illinois University. Rena’ has been traveling various parts of the world for over 30 years and has taken Longwood students on 6 study abroad experiences, which include Chile/Patagonia, Kenya, Tanzania, Ireland, and Nepal. She has traveled to Nepal

four times, most because of the view of the Himalayas and the delightful culture and people of Nepal.

www.longwood.edu/staff/koessler/NEPAL.HTM



Nepal – officially the Federal Democratic Republic of Nepal is a landlocked sovereign nation located in South Asia. With an area of 56,827 square miles and a population of approximately 27 million Nepal is the world's 93rd largest country by land mass and the 41st most populous country. It is located in the Himalayas and bordered to the north by the People's Republic of China, and to the south, east, and west by the Republic of India.

The mountainous north of Nepal has eight of the world's ten tallest mountains, including the highest point on Earth, Mount Everest, called *Sagarmatha* in Nepali. It contains more than 240 peaks over 20,000 ft. above sea level.

Hinduism is practiced by about 81.3% of Nepalis, making it the country with the highest percentage of Hindus. Buddhism is linked historically with Nepal and is practiced by 16%, Kirat 5.1%, Islam by 4.4%, Christianity 1.4%, and animism 0.4%.

A monarchy throughout most of its history, Nepal was ruled by the Shah dynasty of kings from 1768, when Prithvi Narayan Shah unified its many small kingdoms, until 2008; a decade-long Civil War involving the Communist Party of Nepal (Maoist) and several weeks of mass protests by all major political parties led to the 12-point agreement of November 22, 2005. The ensuing elections for the constituent assembly on May 28, 2008 overwhelmingly favored the abolition of the monarchy and the establishment of a federal multiparty representative democratic republic.

July 15th meeting – Phyllis Guilliams – *Life in Japan and Japanese Dolls*

Phyllis presented a very informative, visual, personal fact filled program. Great job Phyllis!



Upcoming Meetings:

September 16 – Casey Clabough from Appomattox will talk on 2 of his books. The novel *Confederato* is about Confederates living in Brazil after the Civil War. *Women of War: Selected Memoirs, Poems, and Fiction by Virginia Women Who Lived Through the Civil War*. This book comes out later this month and includes writings by women from Richmond, Amelia, and Lynchburg. Casey teaches English at Lynchburg College.

October 21 – “*The Blueway*” – by Damien Fehrer, Friends of the Appomattox River. The Farmville Blueway includes portions of Buffalo Creek and the Appomattox River and is approximately 4 miles of water trails. Making these streams easily accessible will serve the public interest and add vitality to our community by making an area rich in natural and human history available for all to discover. It will provide recreational and educational opportunities for the community, while allowing our community to reap economic and social benefits from the river while maintaining their natural, historic, and scenic value.

August in Prince Edward County History

- | | | | |
|------------------|---|------------------|--|
| 8-1-1922 | Death of prominent Prince Edward tobacco merchant Walter Grey Dunnington, owner of Poplar Hill | 8-14-1902 | Work commences to build Norfolk & Western station |
| 8-2-1897 | Civil rights activist W. E. B. DuBois studies Prince Edward County's black population for U.S. Labor Commission report | 8-14-1945 | County-wide nighttime celebrations for end of World War II |
| 8-4-1851 | Francis Carr and Christian Ehrman contracted with the Southside Railroad to build the High Bridge original wooden superstructure. | 8-17-1947 | WFLO went on the air |
| 8-4-1899 | Edward Wiltse, jeweler and silversmith, died | 8-18-1913 | Henry Lindsey elected Fire Chief |
| 8-4-1922 | J. C. Brickert seeks location at Third and Randolph streets to locate Farmville's first service station | 8-19-1962 | Sayler's Creek Battlefield Park dedicated |
| 8-5-1942 | First daylight air raid test | 8-20-1969 | Hurricane Camille brings flooding to Farmville |
| 8-8-1907 | Prince Edward Hotel opened | 8-24-1884 | Farmville Lithia Springs incorporate |
| 8-8-1952 | Farmville Drive-in opened on Route 15 just south of Farmville | 8-26-1867 | Prince Edward resident and nationally-recognized educator Robert Rousa Moton born in Amelia County |
| 8-10-1993 | By-laws adopted for Rural Education Foundation, creating the Fuqua School that replaced Prince Edward Academy | 8-27-1894 | Gov. O'Ferrall arrives for visit to Farmville |
| | | 8-27-1909 | Farmville Silver Band's first open air concert |
| | | 8-30-1895 | The Confederate Monument Association organized |
| | | 8-30-1905 | Partial eclipse of the sun witnessed |